

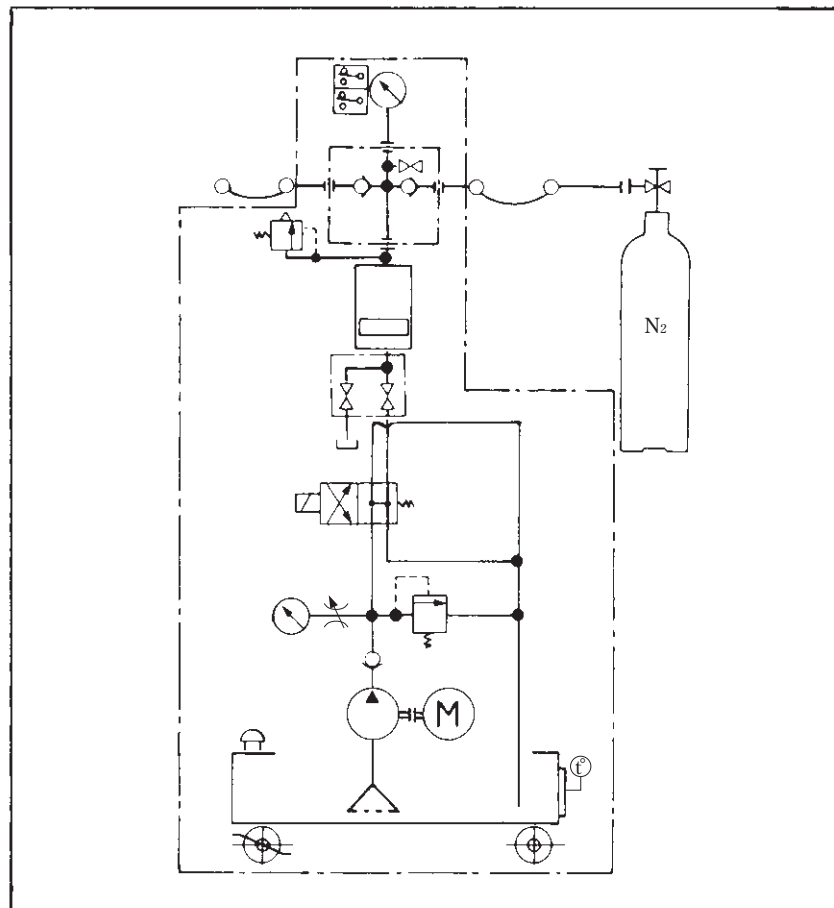
N2 gas booster

N2 gas booster has high energy saving effect. Our piston type accumulators that have a long application history and high reliability that we are proud of are being installed in it as a compressor.

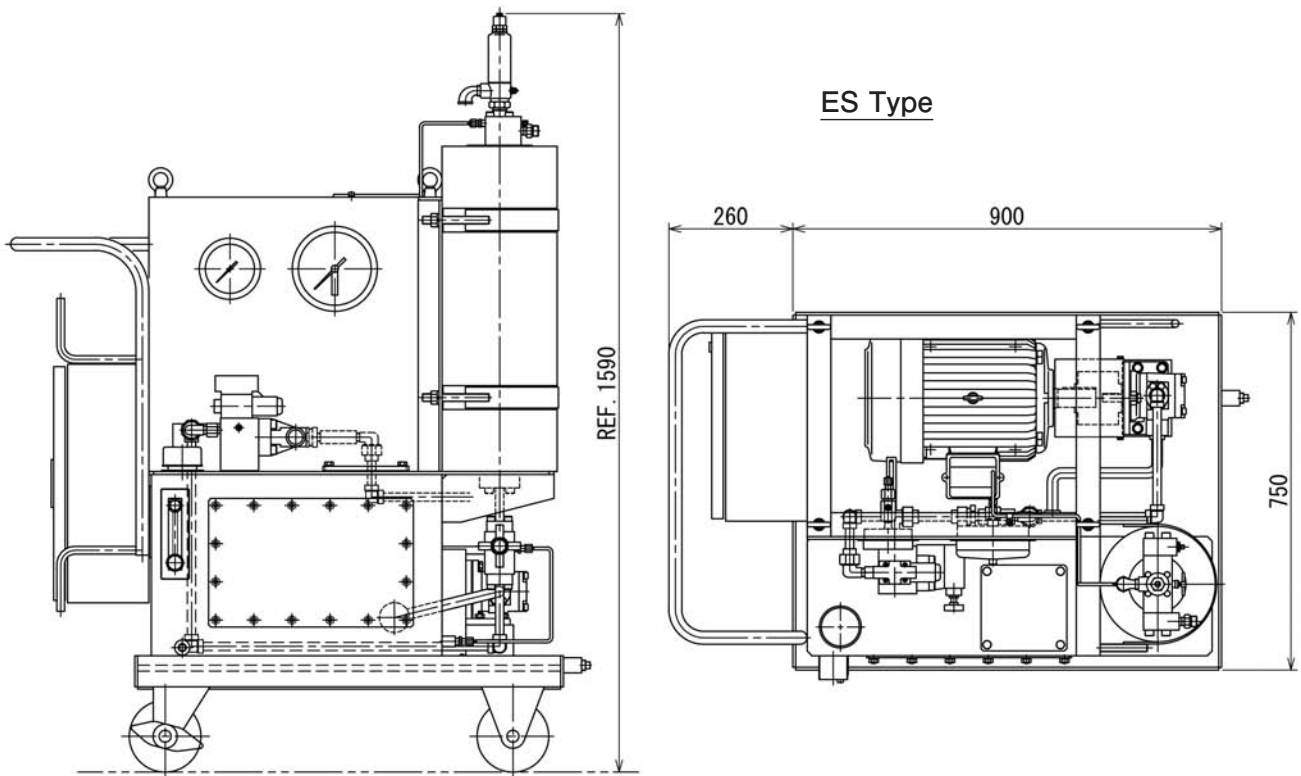
■ Features :

- Compact portable type
- Low noise
- Small power consumption
- Cooling water is not required.
- Easy maintenance with simple structure
- Less expensive than conventional compressors

Circuit diagram



N2 gas booster



■ Model symbols :

HYB 10 - ES 2 - 24 - 7.5 × 220V

- Hydraulically driven booster unit
- Booster (Compressor) volume (ℓ)
- ES:Electrical control type
- Type
- Design number
- Maximum N2 gas generating pressure (MPa)
(Max W.P of Hyd. pump Minus 1.5)
- Electric motor output (kW)
- Power source voltage (※ Please offer this information in advance.)

Reference information from proven specification (Standard model)

Specification	Model	ES
Booster Unit	Motor output/cycle	kW/Hz 7.5/60 (7.5/50)
	Max generated gas pressure	MPa 24
	Dimensions	mm 750 × 1160 × 1590
	Mass	kg 600
Hydraulic Pump	Max working pressure	MPa 25.5
	Delivery	ℓ /min 10.6
	Revolution	rev./min 1800 (1500)
Compressor	Type	- Piston type
	Volume	ℓ 10

Note: This product is not suitable for long time continuous operation because this is for charging N2 gas into our standard accumulator.
If you intend to use this product in other purpose than the above, please let us know before you order.