

# Piston type accumulator

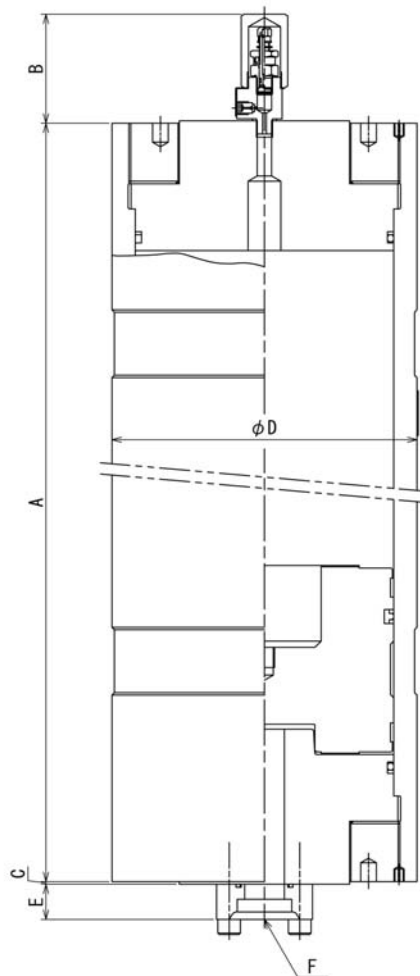
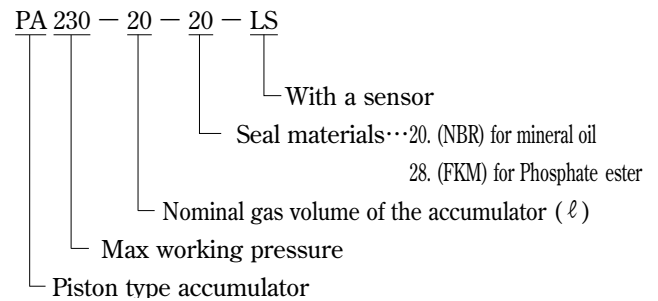
We started to produce piston type accumulators with our own technology in 1967 and after 3 years, ones of 150 liter was supplied to Nippon Steel Corporation Oita factory for their slab continuous casting machine.

Since then they have been widely used by many customers and applications such as the Ministry of Defense in Japan, power plants, hydraulic controls, etc.

## ■ Features :

- Because low friction packing is used, the slide friction is small.
- There is no limitation in the ratio between N2 gas precharge pressure and hydraulic pressure.
- Large gas volume type and High pressure type can be provided.

## ■ Model symbols :



Model	Max W.P. (MPa)	Gas Volume (ℓ)	Mass (kg)	A (mm)	B (mm)	C (mm)	D (mm)	E (mm)	F	Max flow rate (ℓ/min)
PA230-20	22.6	20	160	953	87	2	241.8	36	Standard size is #49.1 (40A) or less. Please let us know if it is 50A or more as special.	990
-40		40	220	1562		16	355.6			
-60		60	490	1380						
-100		100	605	1860						

- Please let us know the use condition and the operating fluid.
- As a special specification, large flow rate type can also be provided.
- The accumulator with ASME stamp, CE (PED) mark or Chinese certification can be manufactured.
- The accumulator available to flame retardancy oil or chemical fluid can be provided.
- Equivalent accumulator to cleanliness class NAS6 can be provided.